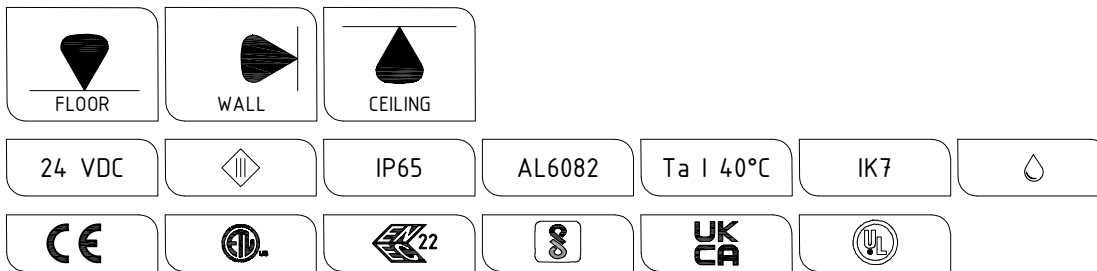
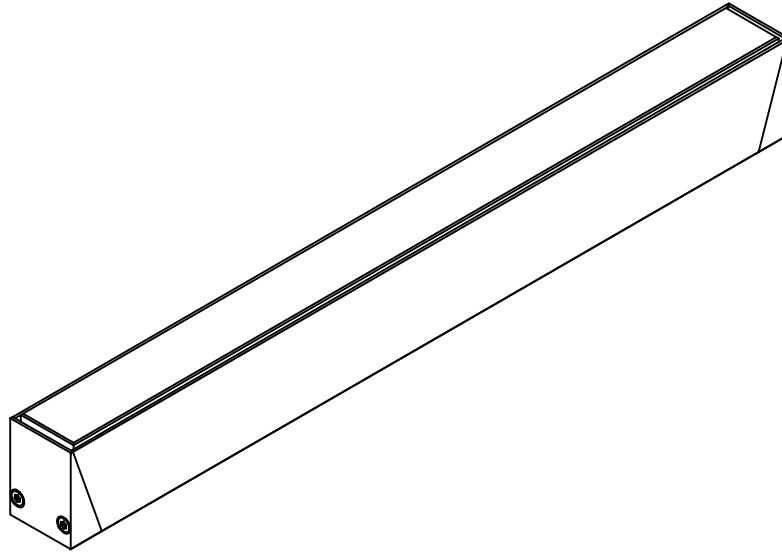


HEMERA

INSTALLATION INSTRUCTIONS (FIXTURE)



ALL DIMENSIONS ARE GIVEN ACCORDING TO THE SI SYSTEM OF UNITS (MM, KG, °C), ADDITIONAL DIMENSIONS THAT ARE WRITTEN IN BRACKETS, ARE GIVEN ACCORDING TO THE U.S. MEASUREMENT SYSTEM (IN, LBS, °F)

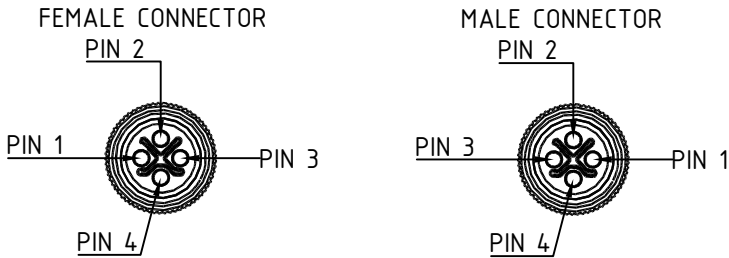
GENERAL REMARKS ON SAFETY

- READ ALL OF THESE INSTRUCTIONS BEFORE INSTALLING THE HOUSING.
- KEEP ALL OF THE INSTRUCTIONS FOR FUTURE REFERENCE.
- INSTALLATION IS TO BE PERFORMED BY A QUALIFIED CONTRACTOR.
- ALL INSTALLATIONS ARE TO CONFORM TO THE STANDARDS OF THE NATIONAL ELECTRICAL CODE AS WELL AS ALL LOCAL JURISDICTIONAL CODES AND REGULATIONS.
- THE MANUFACTURER ACCEPTS NO RESPONSIBILITY FOR DAMAGE TO PERSONS OR PROPERTY ARISING THROUGH IMPROPER USE OR INSTALLATION.
- FOR WARRANTY CONDITIONS PLEASE CONSULT LOCAL SALES REPRESENTATIVE

WIRE MARKINGS

OPTION WITH SINGLE LED COLOR

- + BROWN WIRE (POS. 1 IN CONNECTOR)
- WHITE WIRE (POS. 2 IN CONNECTOR)
- BLUE WIRE (POS. 3 IN CONNECTOR)
- + BLACK WIRE (POS. 4 IN CONNECTOR)



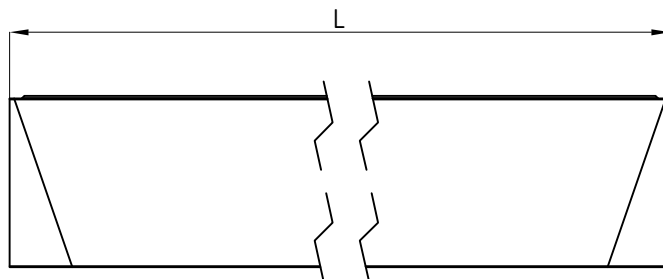
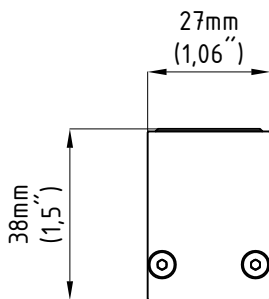
NOTE:

CONTROL GEAR USED TO POWER THIS LUMINAIRE SHALL BE SELV TYPE; HIGHEST ALLOWED U_{out} TO BE MAX 10% OF THE NOMINAL VOLTAGE OF CONTROL GEAR; MAXIMUM ALLOWED WIRING DISTANCE BETWEEN CONTROL GEAR AND LUMINAIRE WITH STANDARD SUPPLIED CABLE IS 9 m OR 30'. INSTALLATION OF LONGER WIRING LENGTHS SHOULD BE DISCUSSED WITH MANUFACTURER PRIOR THE FIXTURE ORDERING.

WHERE LUMINAIRE IS DELIVERED WITH CONNECTING LEADS AND WITHOUT A MEANS OF CONNECTION TO THE POWER SUPPLY TERMINAL BLOCKS MAY BE USED (TERMINAL BLOCKS NOT SUPPLIED BY MANUFACTURER). TERMINAL BLOCKS SHALL BE IN THE SAME IP RATING AS THE LUMINAIRE ITSELF, WITH RATED VOLTAGE OF MIN. 400 V AND RATED CONNECTION CAPACITY OF 10A. CONNECTION WIRE ENDS COMING FROM POWER SUPPLY TO BE PREPARED AS TERMINAL BLOCK MANUFACTURER RECOMMENDS. TERMINAL BLOCK SHOULD BE PLACED IN A LOCATION WHERE IT DOESN'T NOT AFFECT THE LUMINAIRE OPERATION.

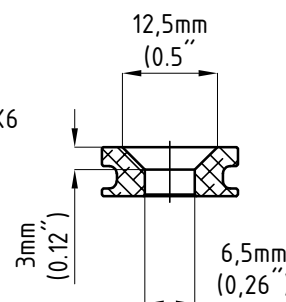
FIXTURE DIMENSIONS

- L =
- 170mm (6,7")
 - 320mm (12,6")
 - 620mm (24,4")
 - 920mm (36,2")
 - 1070mm (42,1")
 - 1220mm (48")



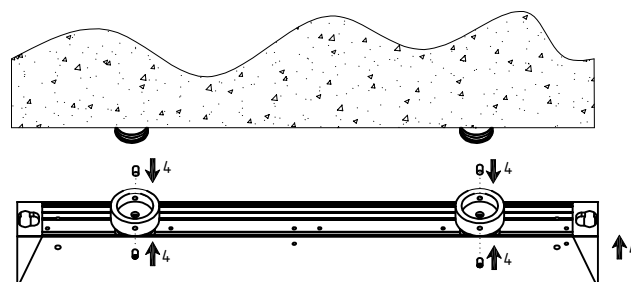
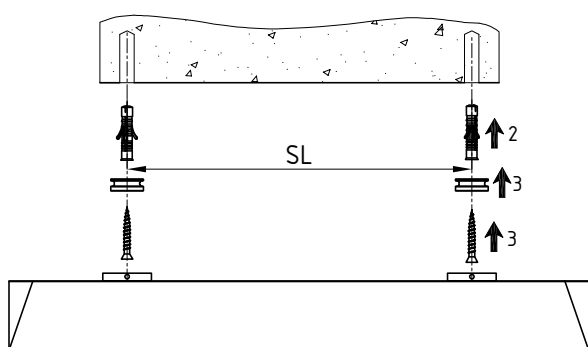
SURFACE

1. MARK THE LOCATION OF MOUNTING HOLES (SCREW $\phi 6 \times 2$) AND DRILL THE HOLES FOR ANCHORS (SCREWS/ANCHOR NOT SUPPLIED BY MANUFACTURER)
2. INSERT THE ANCHORS IN THE HOLES
3. FASTEN THE WALL BRACKET HOLDER TO THE WALL
4. MOUNT THE FIXTURE AND WALL BRACKET HOLDER AND FASTEN IT WITH SCREWS M3X6 DIN 914 (SCREWS SUPPLIED BY MANUFACTURER)
5. CONNECT SUPPLY CABLE AND FIXTURE CABLE (CONNECTION SHALL BE DONE BY QUALIFIED ELECTRICIAN)



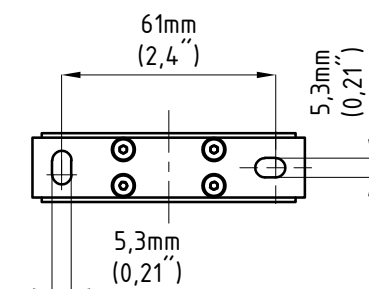
NOTE:
SUGGESTED DISTANCE BETWEEN WALL BRACKETS HOLDERS ARE:

- | | | |
|----|------------------|----------|
| SL | - 190mm (7,5") | (L 320) |
| | - 490mm (19,3") | (L 620) |
| | - 790mm (31,1") | (L 920) |
| | - 940mm (37") | (L 1070) |
| | - 1090mm (42,9") | (L 1220) |



ADJUSTABLE BRACKET/EXTENDED ADJUSTABLE BRACKET

1. MARK THE LOCATION OF MOUNTING HOLES (SCREW $\phi 5 \times 2$) AND DRILL THE HOLES FOR ANCHORS (SCREWS/ANCHOR NOT SUPPLIED BY MANUFACTURER)
2. INSERT THE ANCHORS IN THE HOLES
3. FASTEN THE WALL BRACKET HOLDER TO THE WALL
4. MOUNT THE FIXTURE AND WALL BRACKET HOLDER AND FASTEN IT WITH SCREWS M4X40 DIN 912 (SCREWS SUPPLIED BY MANUFACTURER)
5. CONNECT SUPPLY CABLE AND FIXTURE CABLE (CONNECTION SHALL BE DONE BY QUALIFIED ELECTRICIAN)



IMPORTANT SUGGESTION:

SUGGESTED DISTANCE BETWEEN WALL BRACKETS HOLDERS ARE:

- | | | |
|----|---------------------------------|----------|
| SL | - CENTER | (L 320) |
| | - 320mm (12,6") - 500mm (19,6") | (L 620) |
| | - 420mm (16,5") - 760mm (29,9") | (L 920) |
| | - 520mm (20,4") - 970mm (38,1") | (L 1070) |
| | - 610mm (24") - 1130mm (44,4") | (L 1220) |

