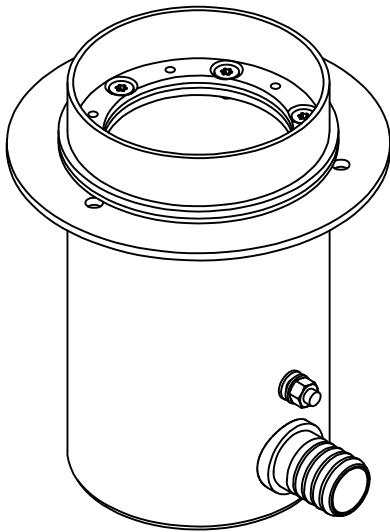
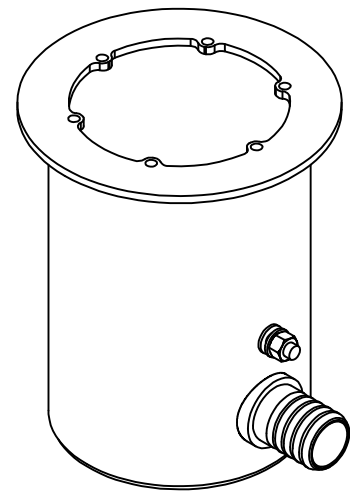


ARPOOL M / ARPOOL CORAL INSTALLATION INSTRUCTIONS (HOUSING)

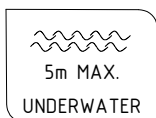
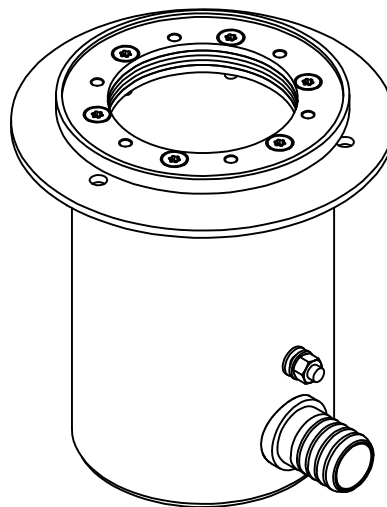
CONCRETE



STAINLESS STEEL



LINER



IP68

AISI316L

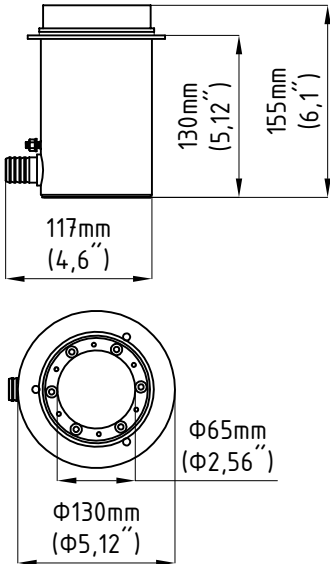


ALL DIMENSIONS ARE GIVEN ACCORDING TO THE SI SYSTEM OF UNITS (MM, KG, °C), ADDITIONAL DIMENSIONS THAT ARE WRITTEN IN BRACKETS, ARE GIVEN ACCORDING TO THE U.S. MEASUREMENT SYSTEM (IN, LBS, °F)

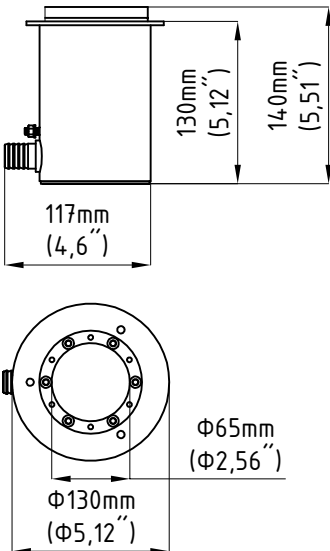
GENERAL REMARKS ON SAFETY

- READ ALL OF THESE INSTRUCTIONS BEFORE INSTALLATION.
- KEEP ALL OF THE INSTRUCTIONS FOR FUTURE REFERENCE.
- INSTALLATION IS TO BE PERFORMED BY A QUALIFIED CONTRACTOR.
- ALL INSTALLATIONS ARE TO CONFORM TO THE STANDARDS OF THE NATIONAL ELECTRICAL CODE AS WELL AS ALL LOCAL JURISDICTIONAL CODES AND REGULATIONS.
- THE MANUFACTURER ACCEPTS NO RESPONSIBILITY FOR DAMAGE TO PERSONS OR PROPERTY ARISING THROUGH IMPROPER USE OR INSTALLATION.
- HOUSINGS' SURFACES EXPOSED TO THE EFFECTS OF WATER (INCLUDING WATER CONTAINING CHLORINE) ARE MADE OUT OF AISI316L STAINLESS STEEL. AISI316L IS SUITABLE FOR THIS USE AND WILL PREVENT CORROSION UP TO LEVEL OF 1000 PPM OF CHLORINE IN WATER AND UP TO WATER pH LEVEL OF 7.
- FOR WARRANTY CONDITIONS PLEASE CONSULT LOCAL SALES REPRESENTATIVE

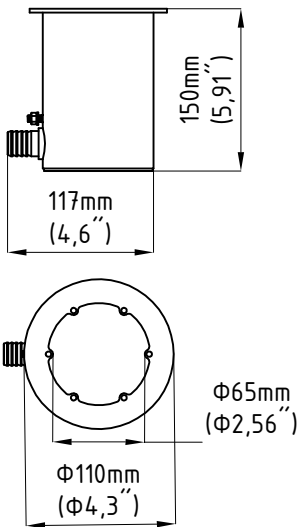
HOUSING DIMENSIONS
CONCRETE POOL HOUSING



LINER POOL HOUSING



STAINLESS STEEL POOL HOUSING



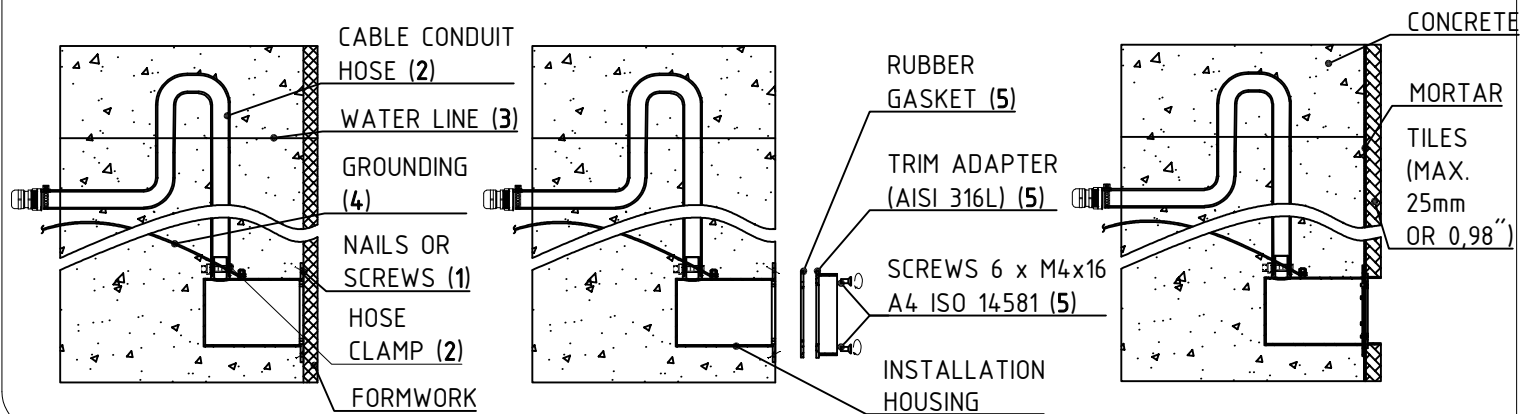
CONCRETE POOL HOUSING

1. ATTACH THE ARPOOL INSTALLATION HOUSING TO THE FORMWORK WITH SCREWS (A4/MARINE GRADE) OR NAILS (A4/MARINE GRADE) (SCREWS OR NAILS NOT SUPPLIED BY MANUFACTURER)
2. ATTACH CABLE CONDUIT HOSE TO HOUSING WITH HOSE CLAMP
3. MAKE SURE TO CREATE A LOOP WITH THE CABLE CONDUIT HOSE ABOVE THE WATER LINE TO PREVENT WATER DRAINAGE FROM THE POOL THROUGH THE HOSE
4. GROUND THE HOUSING AND POUR CONCRETE (GROUNDING WIRE NOT SUPPLIED BY MANUFACTURER)
5. WHEN FORMWORK IS REMOVED, CUT THE EXCESS OF NAILS/SCREWS, THEN PLACE RUBBER GASKET AND TRIM ADAPTER ON THE INSTALLATION HOUSING. ONCE PLACED FASTEN WITH SCREWS (SCREWS SUPPLIED BY MANUFACTURER M4X16 A4 / MARINE GRADE).
6. PUT MORTAR AND TILES (MAX. TILES AND MORTAR LAYER TO BE 25mm)

IMPORTANT NOTE:

BEFORE ATTACHING THE HOUSING (1), PROTECT THE HOUSING OPENING WITH TAPE, TO PREVENT EXCESS MATERIAL IN THE HOUSING USE DRILLING TEMPLATE FROM THE MANUAL. TEMPLATE WILL ENSURE PROPER INSTALLATION HOUSING POSITIONING WITH FIXTURE INSTALLATION HOLES AT 12 AND 6 O'CLOCK.

IT IS ADVISED THAT THE THICKNESS OF TILE+MORTAR EQUALS THE THICKNESS OF TRIM ADAPTER AND RUBBER SEAL.

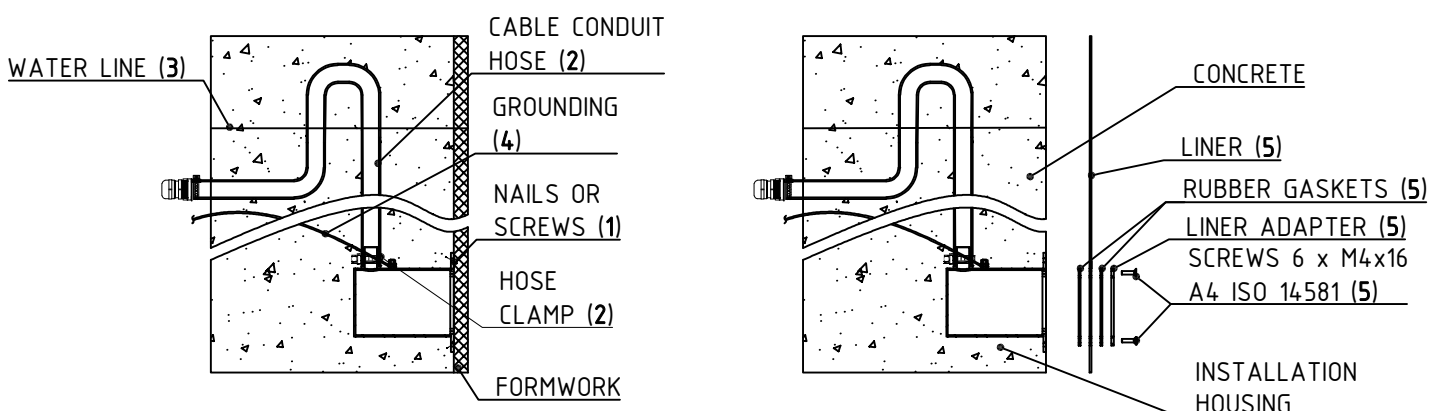


LINER POOL HOUSING

1. ATTACH THE ARPOOL INSTALLATION HOUSING TO THE FORMWORK WITH SCREWS (A4/MARINE GRADE) OR NAILS (A4/MARINE GRADE) (SCREWS OR NAILS NOT SUPPLIED BY MANUFACTURER)
2. ATTACH CABLE CONDUIT HOSE TO HOUSING GLAND WITH HOSE CLAMP
3. MAKE SURE TO CREATE A LOOP WITH THE CABLE CONDUIT HOSE ABOVE THE WATER LINE TO PREVENT WATER DRAINAGE FROM THE POOL THROUGH THE HOSE
4. GROUND THE HOUSING (GROUNDING WIRE NOT SUPPLIED BY MANUFACTURER)
5. WHEN FORMWORK IS REMOVED PLACE FIRST RUBBER GASKET AND USE DRILLING TEMPLATE FROM THE MANUAL FOR CUT LINER, THEN PLACE SECOND RUBBER GASKET AND LINER ADAPTER. ONCE PLACED FASTEN WITH SCREWS (SCREWS SUPPLIED BY MANUFACTURER M4X16 A4 / MARINE GRADE)

IMPORTANT SUGGESTION:

BEFORE ATTACHING THE HOUSING (1), PROTECT THE HOUSING OPENING WITH TAPE, TO PREVENT EXCESS MATERIAL IN THE HOUSING USE DRILLING TEMPLATE FROM THE MANUAL. TEMPLATE WILL ENSURE PROPER INSTALLATION HOUSING POSITIONING WITH FIXTURE INSTALLATION HOLES AT 12 AND 6 O'CLOCK



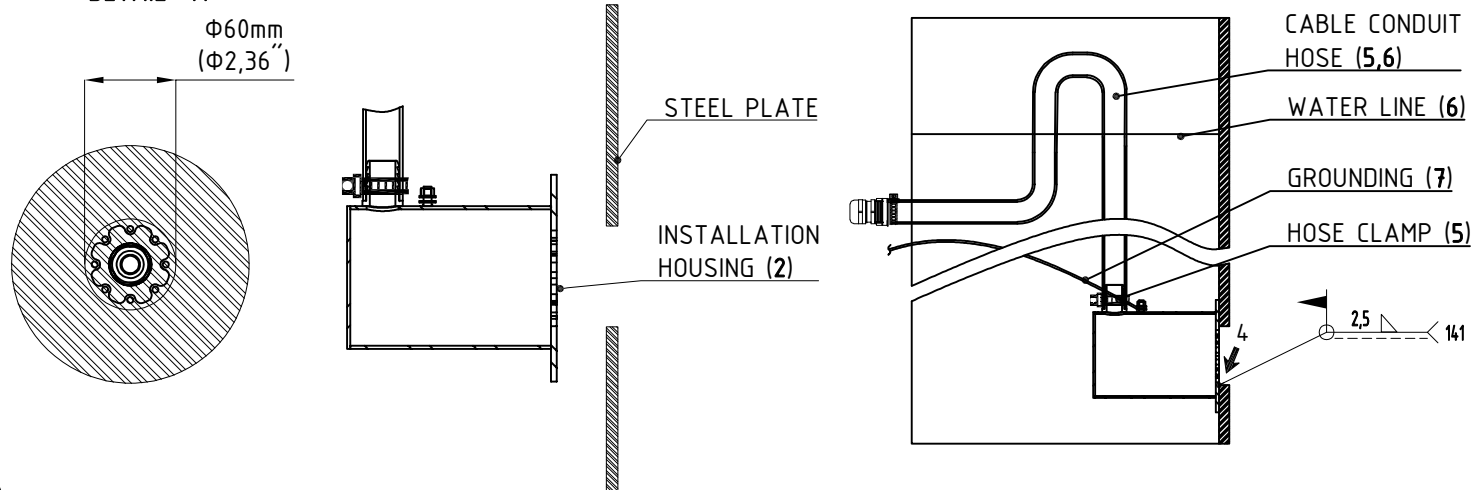
STAINLESS STEEL POOL HOUSING

1. CUT STEEL SHEET FOR HOUSING MOUNT AS PER DETAIL "A" BELOW
2. PLACE THE HOUSING BEHIND THE STEEL SHEETING
3. FIX THE HOUSING TO THE STEEL SHEETING
4. WELD THE HOUSING TO THE STEEL SHEETING. WELDING PROCESS SHALL BE PERFORMED BY QUALIFIED PROFESSIONAL.
5. ROUTE THE CABLE CONDUIT HOSE TO THE DRY AREA WHERE THE POWER SUPPLY WILL BE LOCATED, AND FIX THE CABLE CONDUIT HOSE WITH THE HOSE CLAMP (CONDUIT HOSE AND HOSE CLAMP SUPPLIED BY MANUFACTURER).
6. MAKE SURE TO CREATE A LOOP WITH THE CABLE CONDUIT HOSE ABOVE THE WATER LINE TO PREVENT WATER DRAINAGE FROM THE POOL THROUGH THE HOSE
7. GROUND THE HOUSING (GROUNDING WIRE NOT SUPPLIED BY MANUFACTURER)

IMPORTANT SUGGESTION:

USE DRILLING TEMPLATE AND HOUSING ORIENTATION GUIDE FROM THE MANUAL. GUIDE WILL ENSURE PROPER INSTALLATION HOUSING ORIENTATION

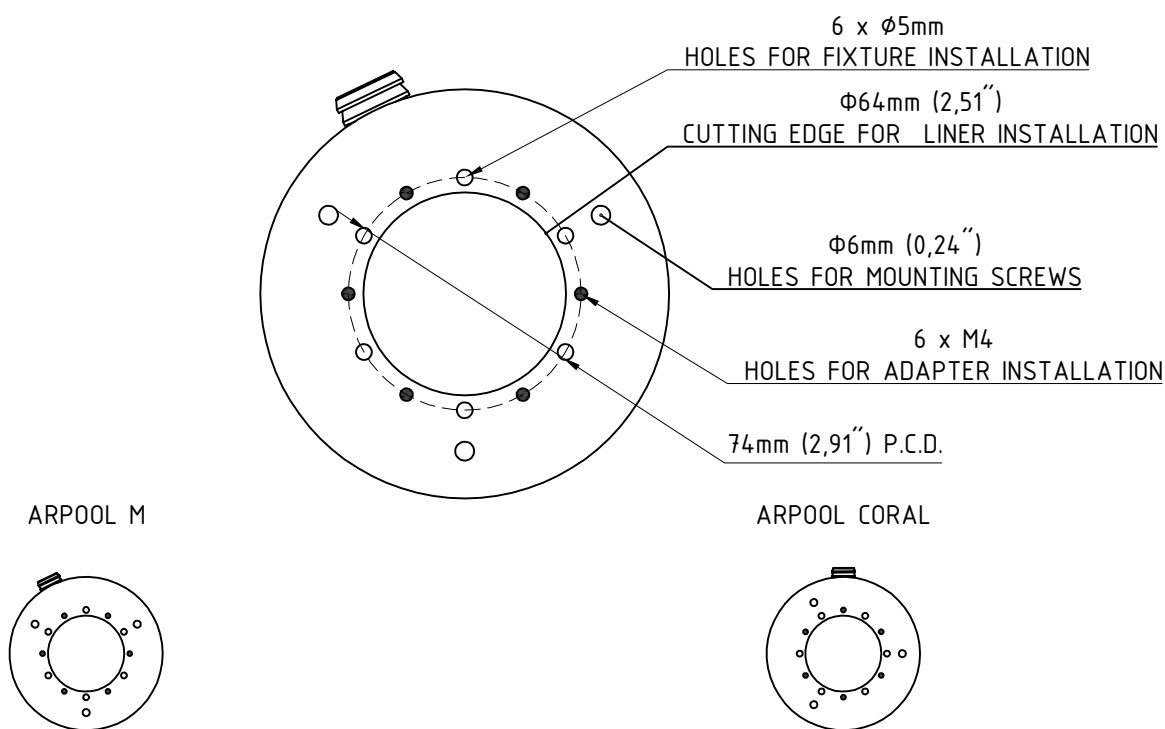
DETAIL "A"



DRILLING TEMPLATE AND HOUSING ORIENTATION GUIDE

NOTE:

DRAWING IS NOT IN 1:1 SCALE



FOR **ARPOOL M** INSTALLATION KEEP 5mm HOLES ON 12 AND 6 O'CLOCK (VERTICAL), AS THIS WILL ENSURE PROPER ORIENTATION OF LUMINAIRE

FOR **ARPOOL CORAL** INSTALLATION KEEP 5mm HOLES ON 3 AND 9 O'CLOCK (HORIZONTAL), AS THIS WILL ENSURE PROPER ORIENTATION OF LUMINAIRE